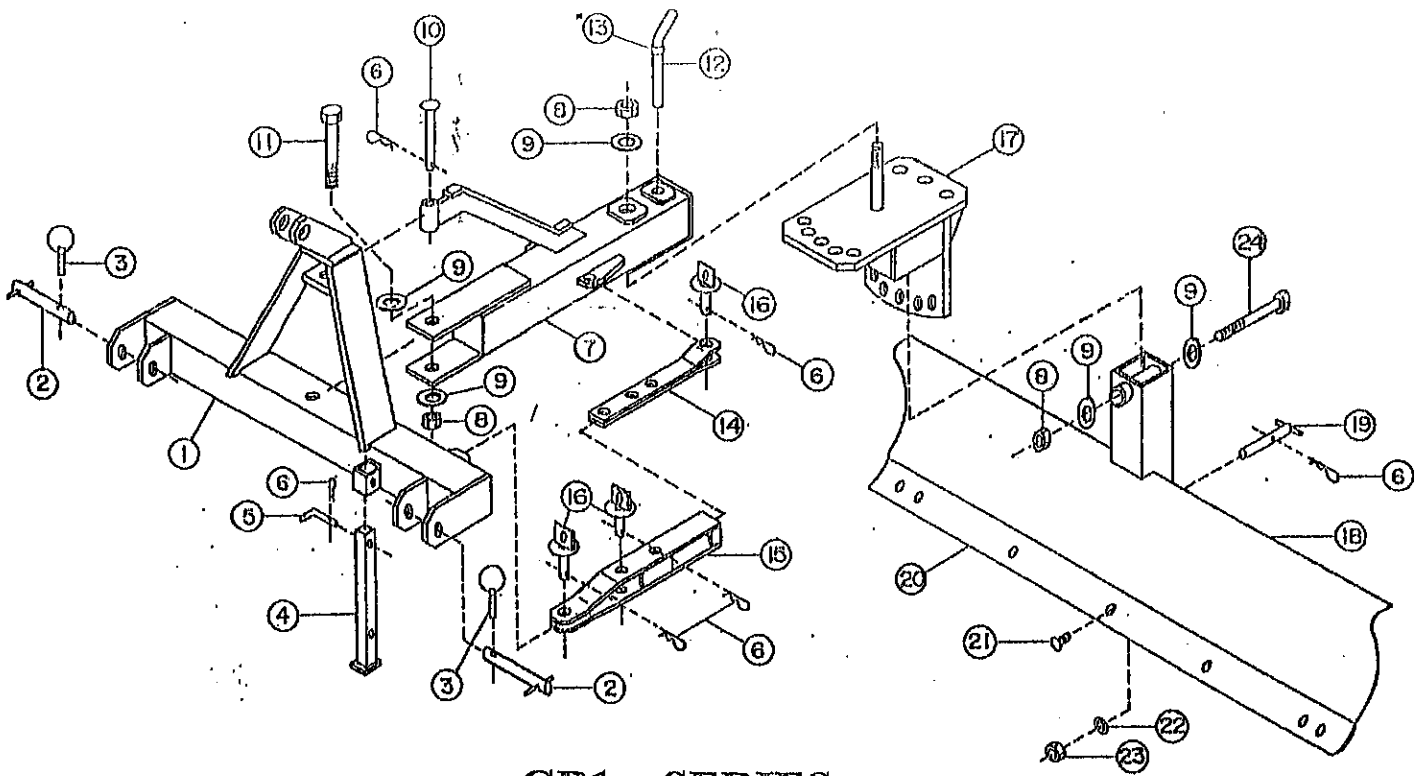


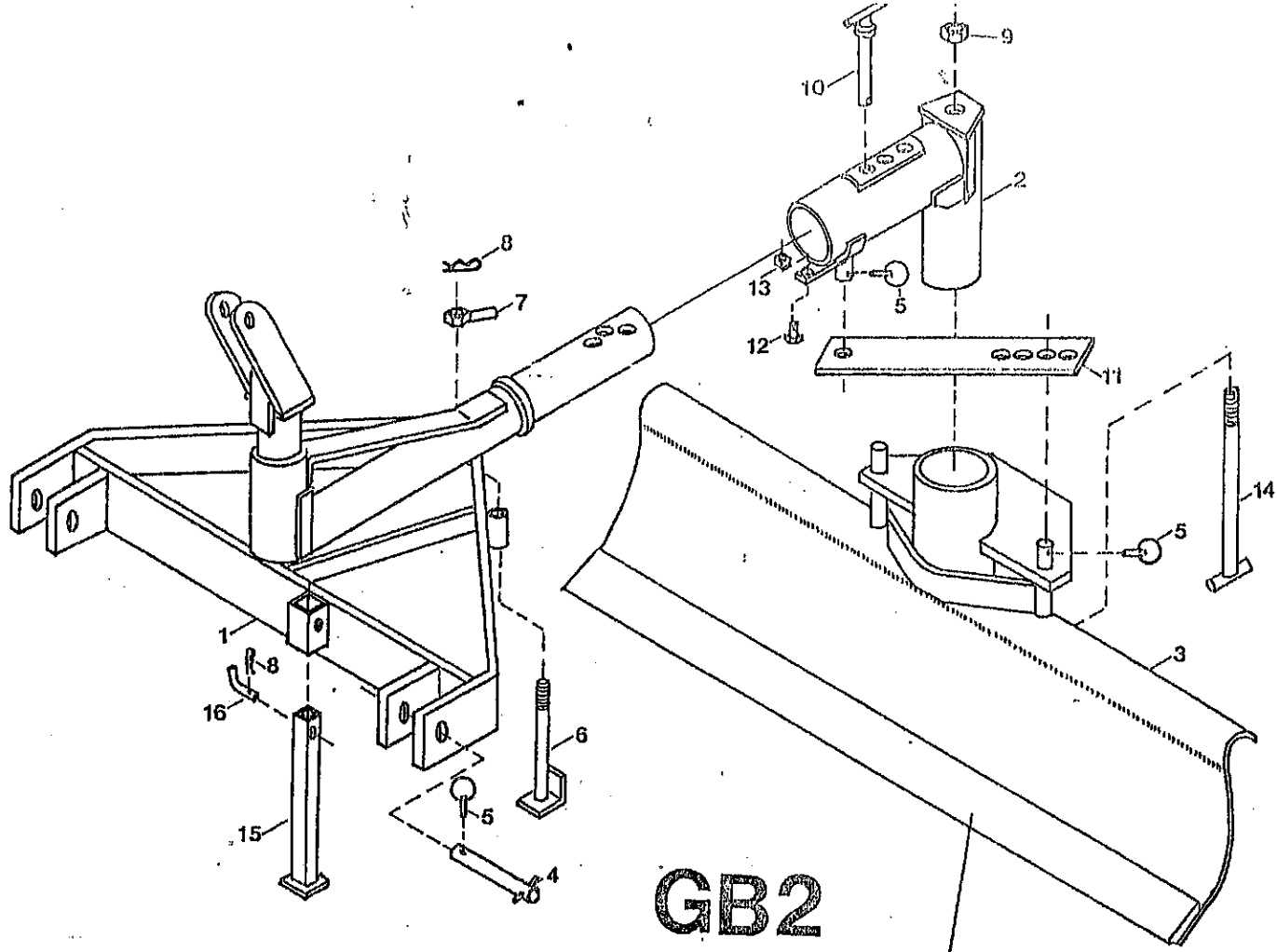
## GB0 SERIES

REF. NO.	PART NO.	DESCRIPTION
1	13388	Main Frame Weldment
2	T-690	A-Frame
3	T-725	Hex Bolt, 5/8" x 3 3/4" Gr. 5
4	T-24	Lockwasher, 5/8"
5	T-22	Hex Nut, 5/8"
6	13397	Strut
7	T-33	Hitch Pin, Cat. I
8	9192	Hex Bolt, 5/8" x 2 1/2" Gr. 5
9	13400	Angle Adjusting Pin
10	9979	Hair Pin Clip
11	10012	Hex Bolt, 1" x 2 1/2" Gr. 5
12	13404	Moldboard Weldment, 60"
	13405	Moldboard Weldment, 72"
13	10702	Cutting Edge, 60"
	10704	Cutting Edge, 72"
14	10699	Plow Bolt, 5/8" x 1 1/2" Gr. 5



## GB1 - SERIES

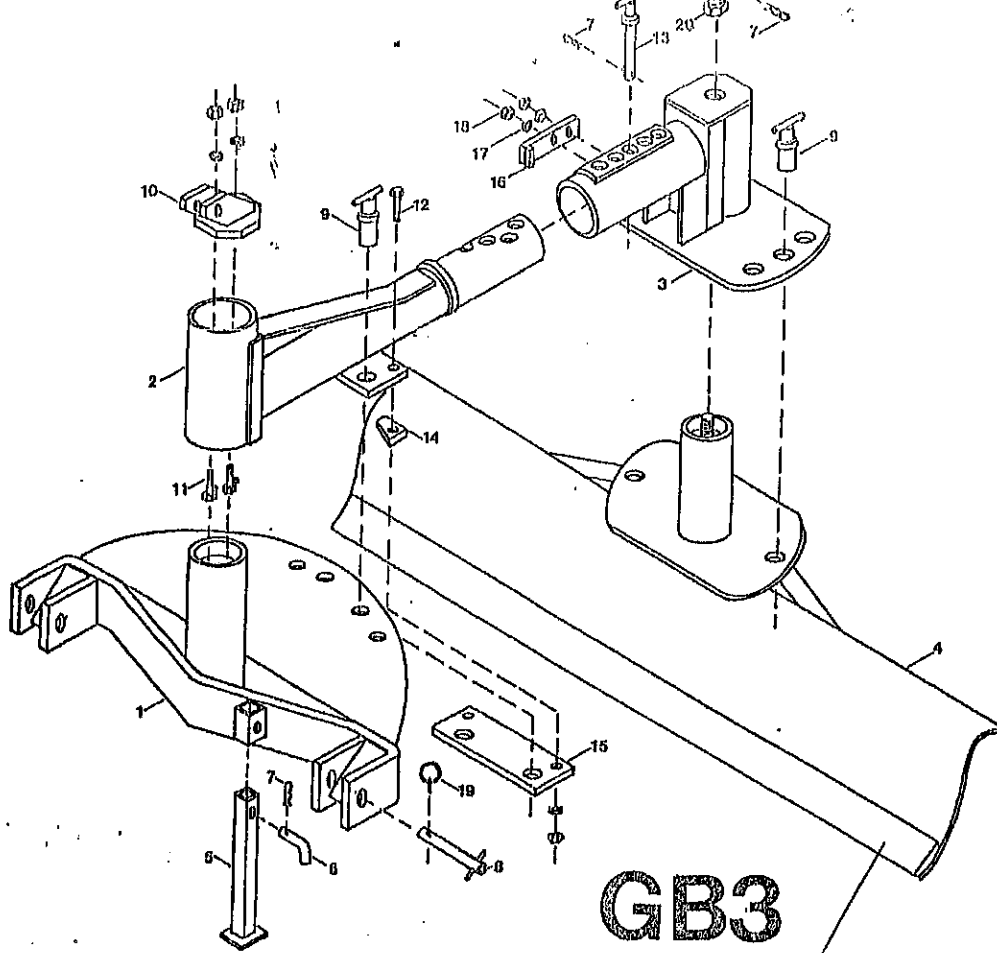
REF. NO.	PART #	DESCRIPTION
1	13331	HITCH WELDMENT
2	10684	HITCH PIN, CAT. 1, 7 3/8"
3	VP252	LYNCH PIN
4	13309	PARK STAND, 24 1/2"
5	9690	PARK STAND PIN
6	9979	HAIR PIN CLIP
7	13335	MAIN BAR WELDMENT
8	10332	HEX LOCK NUT, 1"
9	T-606	FLAT WASHER, 1"
10	13310	STRUT PIN, 1" X 5"
11	T-2662	HEX BOLT, 1" X 6 1/2", GR. 5
12	13348	PIVOT PIN, 3/4" X 10"
13	13349	PIVOT PIN STOP
14	13326	LATERAL ADJUST BAR
15	13328	ADJUST BAR RECEIVER
16	13260	ADJUST BAR PIN, 1" X 3"
17	13339	PIVOT & TILT HOUSING
18	13344	MOLDBOARD, 60"
	13345	MOLDBOARD, 72"
	13346	MOLDBOARD, 84"
19	13347	TILT PIN, 7/8" X 6"
20	10702	CUTTING EDGE, 60"
	10704	CUTTING EDGE, 72"
	10705	CUTTING EDGE, 84"
21	10699	PLOW BOLT 5/8" X 1 1/2"
22	T-24	5/8" LOCK WASHER
23	T-22	5/8" HEX NUT
24	13254	HEX BOLT, 1" X 7" GR. 5



# GB2

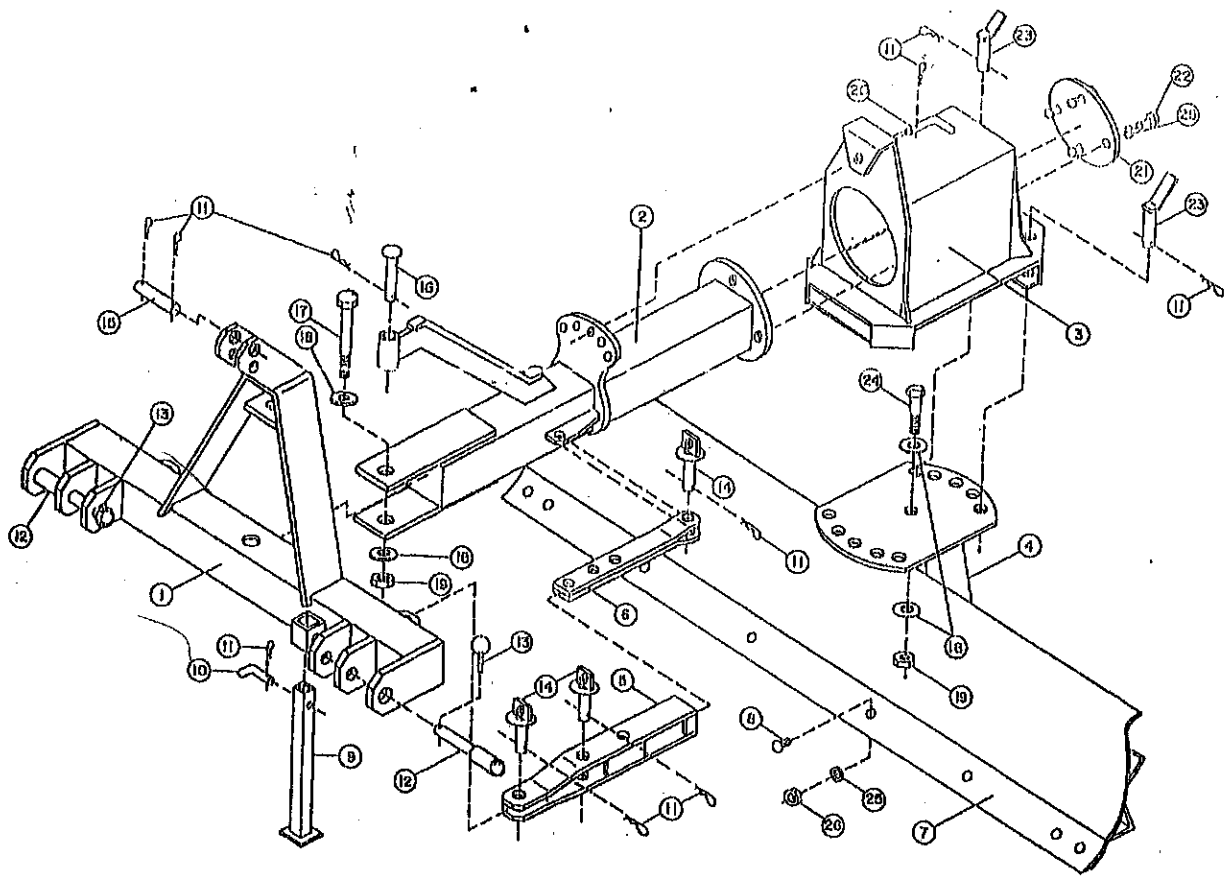
See Cutting Edges on Page 9.

REF NO.	PART NO.	DESCRIPTION
1	11779	Hitch & Swing Arm Weldment
2	11798	Angle & Tilt Elbow Weldment
3	11807	Moldboard & Outer Angle Pipe Weldment, 60"
	11828	Moldboard & Outer Angle Pipe Weldment, 72"
	11829	Moldboard & Outer Angle Pipe Weldment, 84"
4	10684	Hitch Pin, 7/8" x 7 3/8"
5	VP252	Lynch Pin
6	11793	Offset Bolt
7	11796	Offset Bolt Nut
8	9979	Hair Pin Cotter
9	T-19	Hex Nut, 7/8"
10	11564	Tilt Pin
11	11820	Angle Adjusting Bar
12	9659	Hex Bolt, 1/2" x 1"
13	T-26	Hex Nut, 1/2"
14	11816	Retaining Stud, 7/8" x 14"
15	11565	Parking Stand, 19"
16	9690	Parking Stand Pin



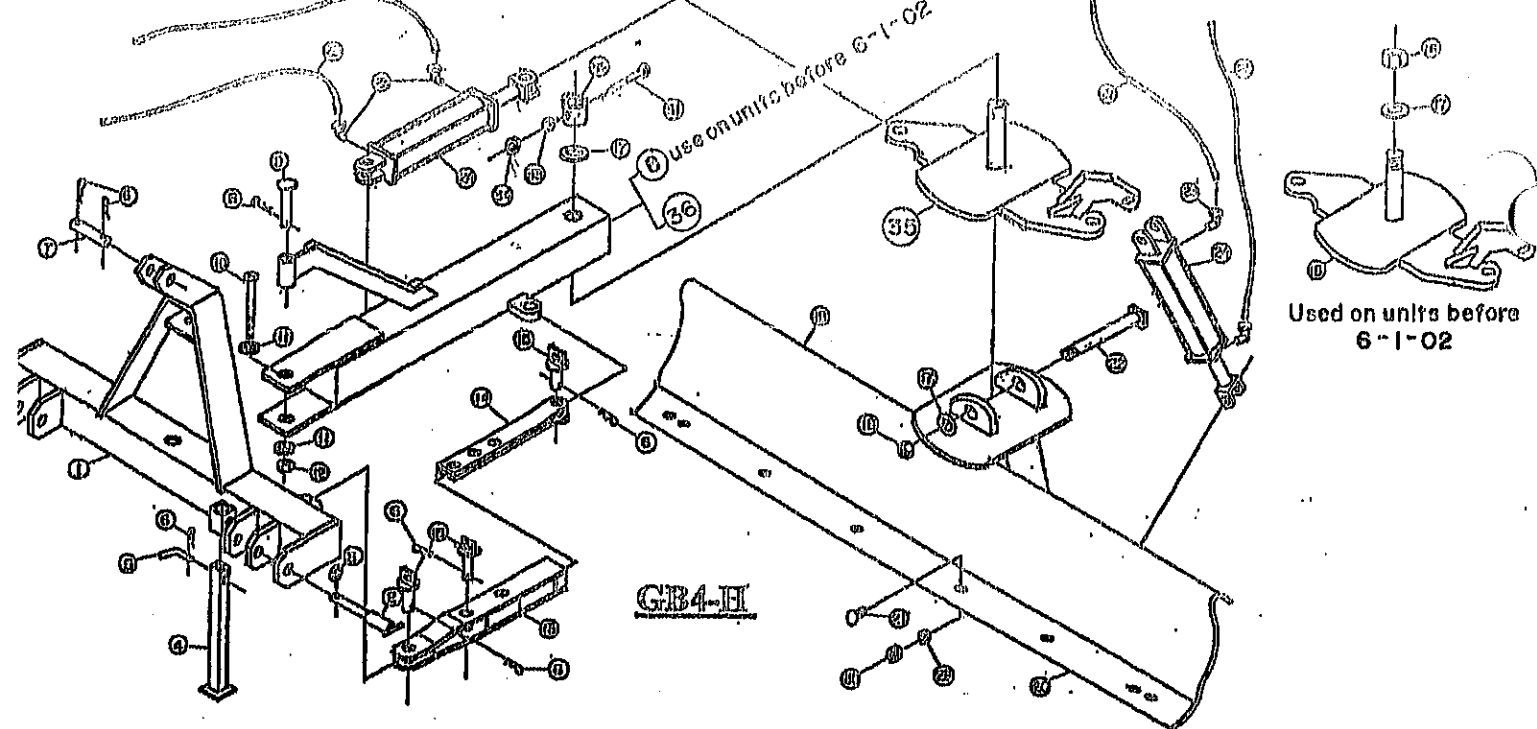
See Cutting Edges on  
Page 9.

<u>REF?</u> <u>NO.</u>	<u>PART</u> <u>NO.</u>	<u>DESCRIPTION</u>
1	11831	Hitch Frame Weldment
2	11652	Swing Frame Weldment
3	11742	Tilt & Angle Weldment
4	11832	Moldboard Weldment, 72"
	11833	Moldboard Weldment, 84"
	11834	Moldboard Weldment, 96"
5	11823	Parking Stand, 21"
6	9690	Parking Stand Pin
7	9979	Hair Pin Cotter
8	10684	Hitch Pin, 7/8" x 7 3/8"
9	11572	Angle & Swing Pin
10	11649	Top Link Lug
11	11665	Retainer Bolt, 5/8" x 2 1/2" Special
12	T-741	Hex Bolt, 5/8" x 2 1/2" Gr. 2
13	11563	Tilt Pin
14	11666	Index Plate Spacer
15	11664	Index Support Plate
16	11682	Tilt Pipe Retainer
17	T-25	Lockwasher, 1/2"
18	T-26	Hex Nut, 1/2"
19	VP252	Lynch Pin
20	T-18A	Locknut, 1 1/8"

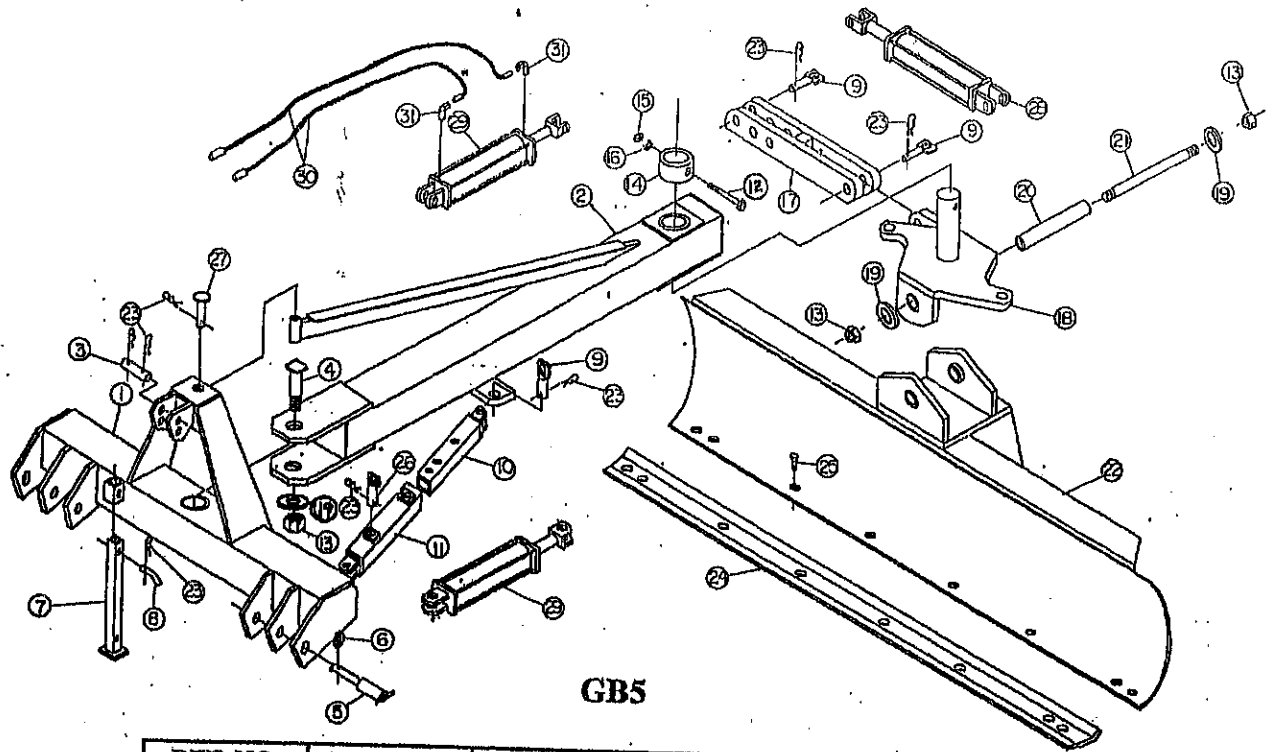


## GB4 - SERIES

REF. NO.	PART #	DESCRIPTION
1	13264	HITCH WELDMENT
2	13279	MAIN BAR WELDMENT
3	13294	PIVOT HOUSING
4	13295	MOLDBOARD, 72"
	13316	MOLDBOARD, 84"
	13317	MOLDBOARD, 96"
5	13259	ADJUSTING BAR RECEIVER
6	13258	LATERAL ADJUSTING BAR
7	10704	CUTTING EDGE, 72"
	10705	CUTTING EDGE, 84"
	10706	CUTTING EDGE, 96"
8	10699	PLOW BOLT 5/8" X 1 1/2"
9	13309	PARK STAND, 24 1/2"
10	9690	PARK STAND PIN
11	9979	HAIR PIN CLIP
12	13257	HITCH PIN, CAT. 1 & 2
13	VP252	LYNCH PIN
14	13260	ADJUST BAR PIN, 1" X 3"
15	13311	TOP LINK PIN, 1" X 3 1/2"
16	13310	STRUT PIN, 1" X 5"
17	13254	HEX BOLT, 1" X 7" GR. 5
18	T-606	FLAT WASHER, 1"
19	10332	HEX LOCK NUT, 1"
20	13308	TILT PIN, 3/4" X 5" BENT
21	13303	ROUND CONNECTOR PLATE
22	13255	HEX BOLT, 5/8" X 1 1/2" GR. 8 NF
23	13304	MOLDBOARD ANGLE ADJUSTING PIN, 1" X 3"
24	13253	HEX BOLT, 1" X 3" GR. 8
25	T-24	5/8" LOCK WASHER
26	T-22	5/8" HEX NUT

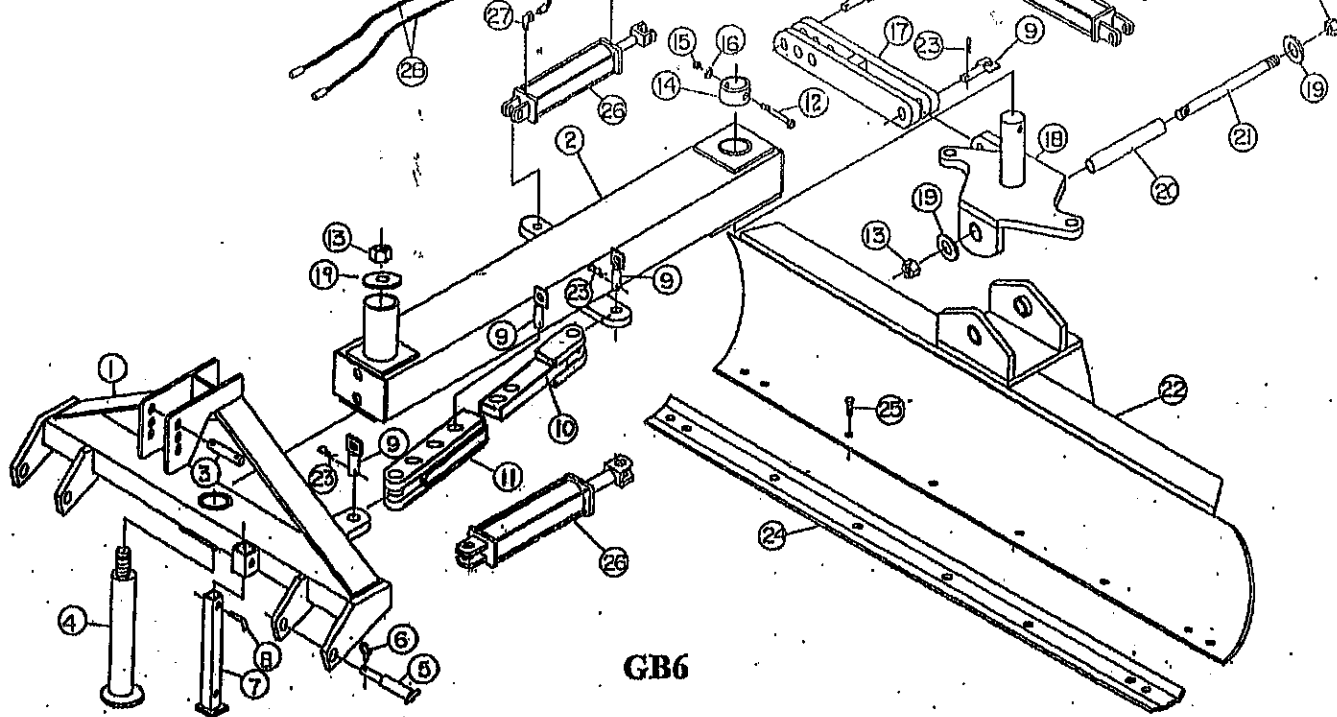


REF. NO.	PART #	DESCRIPTION
1	13726	HITCH WELDMENT
2	13257	HITCH PIN, CAT. 1 & 2
3	VP252	LYNCH PIN
4	13309	PARK STAND, 24 1/2"
5	9690	PARK STAND PIN
6	9979	HAIR PIN CLIP
7	13311	TOP LINK PIN, 1" X 3 1/2"
8	13633	MAIN BAR WELDMENT used before 6-1-02
9	13310	STRUT PIN, 1" X 3"
10	13254	HEX BOLT, 1" X 7" GR. 5
11	T-606	FLAT WASHER, 1"
12	10332	HEX LOCK NUT, 1"
13	13259	ADJUSTING BAR RECEIVER
14	13258	LATERAL ADJUSTING BAR
15	13260	ADJUST BAR PIN, 1" X 3"
16	T-727A	LOCK NUT 1 1/2"
17	T-605	FLAT WASHER, 1 1/2"
18	13635	TILT PLATE WELDMENT used before 6-1-02
19	13636	MOLDBOARD, 72"
	13637	MOLDBOARD, 84"
	13638	MOLDBOARD, 96"
20	10704	CUTTING EDGE, 72"
	10705	CUTTING EDGE, 84"
	10706	CUTTING EDGE, 96"
21	10699	PLOW BOLT 5/8" X 1 1/2" GR. 5
22	13639	REAR TILT BOLT
23	9238	HYDRAULIC ELL
24	11743	HYDRAULIC CYLINDER, 3 X 8
25	13054	HYDRAULIC HOSE, 52"
26	13640	HYDRAULIC HOSE, 62"
27	13641	HYDRAULIC HOSE, 87"
28	13058	HYDRAULIC HOSE, 95"
29	T-24	5/8" LOCK WASHER
30	T-22	5/8" HEX NUT
31	T-892	HEX BOLT 3/8" X 3", GR. 5
32	14738	PIVOT ROD COLLAR
33	T-35	LOCKWASHER, 3/8"
34	T-17	HEX NUT, 3/8"
35	13635a	TILT PLATE WELDMENT
36	13633a	MAIN BAR WELDMENT



GB5

REF. NO.	PART NO.	DESCRIPTION
1	13539	HITCH WELDMENT
2	13540	SWING BAR WELDMENT
3	T-2661	TOP LINK MAST PIN, 1" x 4"
4	13568	FRONT SWING BAR PIN, 1 1/2" x 8 7/8"
5	13528	HITCH PIN, CAT. II or III
6	VP252	LYNCH PIN
7	11213	PARKING STAND, 29"
8	9690	PARKING STAND PIN
9	13260	ADJUSTING BAR PIN, 1" x 3"
10	13570	MANUAL OFFSET ADJUSTING TUBE
11	13569	ADJUSTING TUBE RECEIVER
12	10267	HEX BOLT 1/2" x 5", GR 5
13	T-727A	LOCK NUT, 1 1/2"
14	13632	TILT & PIVOT HOUSING COLLAR
15	T-26	HEX NUT, 1/2"
16	T-25	LOCKWASHER, 1/2"
17	13563	REAR MANUAL TILT BAR
18	13549	TILT & PIVOT HOUSING
19	T-605	FLAT WASHER, 1 1/2"
20	13566	PIVOT HOUSING BUSHING, 9 7/16"
21	13510	REAR TILT BOLT, 13 3/4"
22	13571	MOLDBOARD WELDMENT, 7'
	13572	MOLDBOARD WELDMENT, 8'
	13573	MOLDBOARD WELDMENT, 9'
23	9979	HAIR PIN COTTER
24	10705	CUTTING EDGE, 7'
	10706	CUTTING EDGE, 8'
	13455	CUTTING EDGE, 9'
25	13452	PLOW BOLT, 5/8" x 2 1/4"
26	13567	ADJUSTING TUBE PIN, 1" x 3 1/2"
27	13310	STRUT PIN, 1" x 5"
28	13190	HYDRAULIC CYLINDER, 3 x 12 (1 REQUIRED)
29	11743	HYDRAULIC CYLINDER, 3 x 8 (2 REQUIRED)
30	13574	HYDRAULIC HOSE, 60" (2 REQUIRED)
	12842	HYDRAULIC HOSE, 72" (2 REQUIRED)
	13593	HYDRAULIC HOSE, 120" (2 REQUIRED)
31	9238	HYDRAULIC ELL (6 REQUIRED)



GB6

REF. NO.	PART NO.	DESCRIPTION
1	13512	HITCH WELDMENT (8' OR 9' MODELS)
	13522	HITCH WELDMENT (10' MODELS ONLY)
2	13521	SWING BAR WELDMENT (8' MODELS ONLY - 62")
	13523	SWING BAR WELDMENT (9' OR 10' MODELS - 67 5/8")
3	13527	TOP LINK MAST PIN, 1" x 5 3/8"
4	13471	FRONT SWING BAR PIN
5	13528	HITCH PIN, CAT. II OR III
6	VP252	LYNCH PIN
7	12653	PARKING STAND, 25 1/2"
8	9690	PARKING STAND PIN
9	13260	ADJUSTING BAR PIN
10	13465	MANUAL OFFSET ADJUSTING BAR
11	13466	ADJUSTING BAR RECEIVER
12	10267	HEX BOLT, 1/2" x 5" GR.5
13	T-727A	LOCK NUT, 1 1/2"
14	13632	TILT & PIVOT HOUSING COLLAR
15	T-26	HEX NUT, 1/2"
16	T-25	LOCKWASHER, 1/2"
17	13467	REAR MANUAL TILT BAR
18	13505	TILT & PIVOT HOUSING
19	T-605	FLATWASHER, 1 1/2"
20	13511	PIVOT HOUSING BUSHING, 10"
21	13510	REAR TILT BOLT, 13 3/4"
22	13524	MOLDBOARD WELDMENT, 8'
	13525	MOLDBOARD WELDMENT, 9'
	13526	MOLDBOARD WELDMENT, 10'
23	9979	HAIR PIN COTTER
24	10706	CUTTING EDGE, 8'
	13455	CUTTING EDGE, 9'
	13456	CUTTING EDGE, 10'
25	13452	PLOW BOLT, 5/8" x 2 1/4"
26	13190	CYLINDER 3 x 12 (3 REQUIRED)
27	9238	HYDRAULIC ELL (6 REQUIRED)
28	12351	HYDRAULIC HOSE, 80" (2 REQUIRED)
	12842	HYDRAULIC HOSE, 72" (2 REQUIRED)
	13593	HYDRAULIC HOSE, 120" (2 REQUIRED)